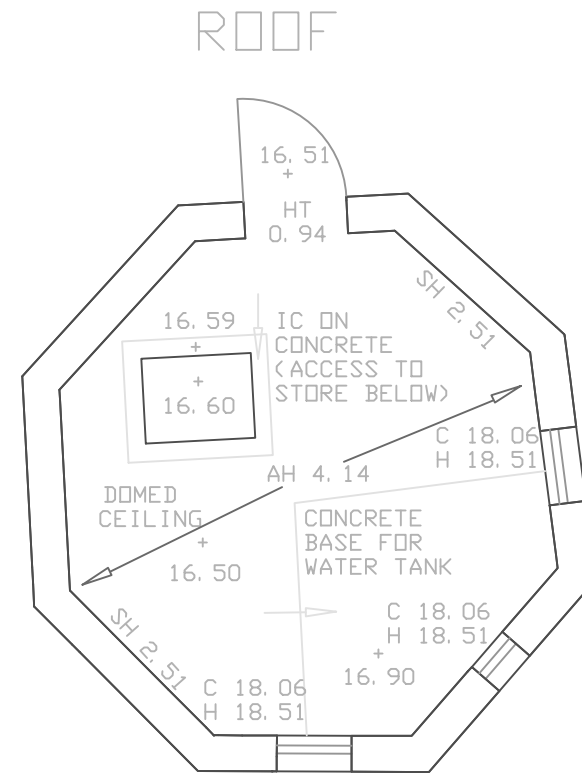
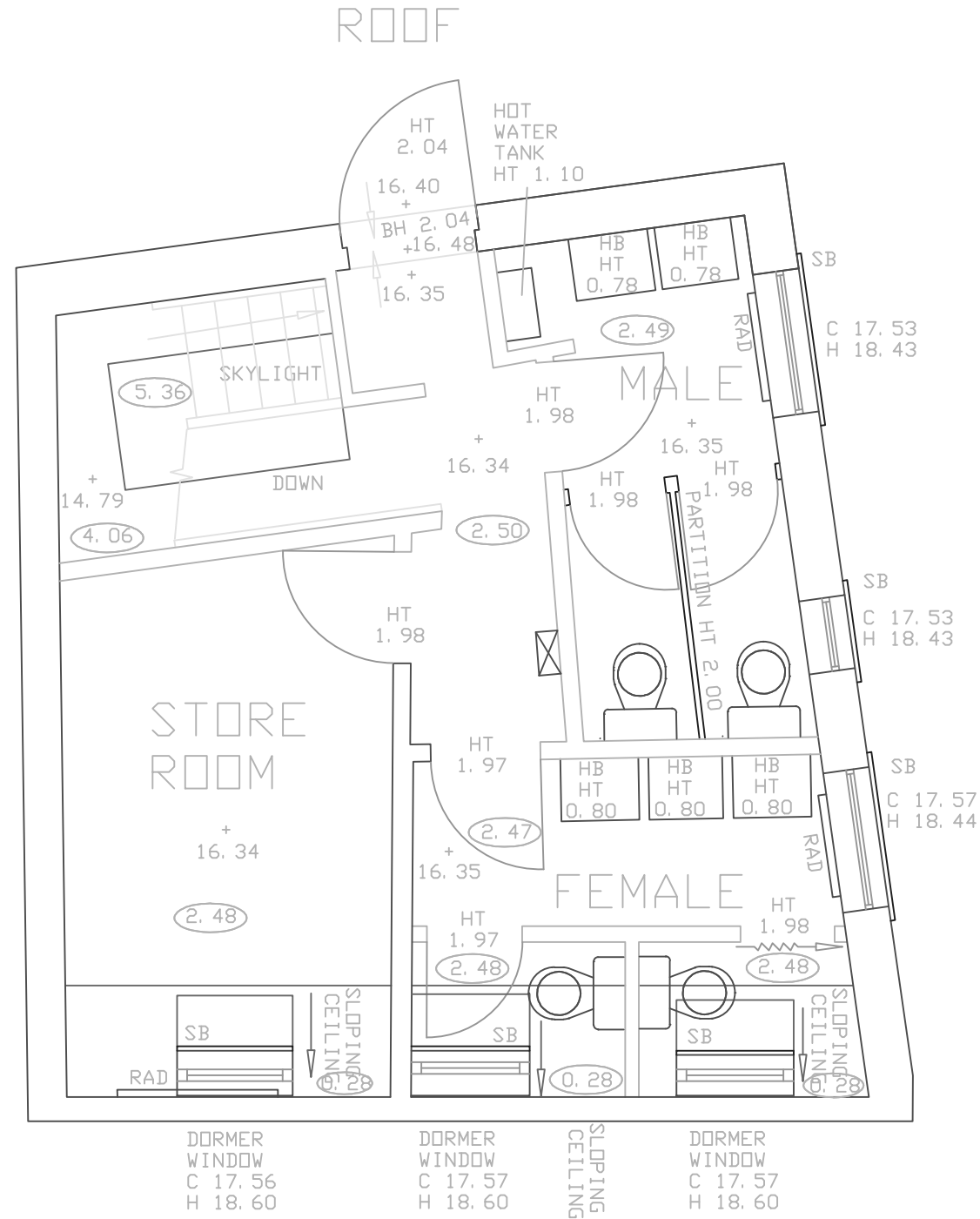


PLEASE NOTE

CAD DATA verified as correct end of Q4 1998

The information held on this drawing has been verified by a Regional Building Surveyor and was deemed correct at the above date. Please notify Regional CAD Team of any discrepancy



MIDLAND BANK Plc  
4 KING STREET  
STOUD  
GLOUCESTERSHIRE  
GL5 3DS  
SECOND FLOOR  
AS BUILT

20.06.94  
1:50 @ A3

7283SV2F